

# NICE AIRPORT - 2020

## REPRESENTATIVE DETAILS

TT Car Transit  
Boulevard Jacqueline Auriol Inferieur  
Nice 06281  
(Nice Airport)

**See next page for photos/map to help  
you find the Nice Airport location.**



**GOOGLE MAP LINK  
CLICK HERE**

## CONTACT DETAILS / HOURS

**p:** +33 (0)4 93 21 59 26

**e:** [infonice@ttroissy.net](mailto:infonice@ttroissy.net)

**o:** Mon-Fri 8am-5pm\*

\*Open outside above days/hours with flight details or an appointment confirmed 4 working days in advance.

## COLLECTION PROCEDURE

**\*No collections prior to 6am. Collections possible until 8pm (no flight number) or midnight (with flight number).**

**Terminal 1:** Take the free Airport shuttle to Terminal 2, then follow Terminal 2's instructions.

**Terminal 2:** Exit Door 3, turn left and walk 150metres to the red bungalow (TT Car office). If you get lost, please phone TT Car on above number.

- **Arriving off a flight?** Please ensure your flight details are on your voucher/contract.
- **Not arriving off a flight?** Please phone or email the location to reconfirm your collection time 4 working days in advance, then follow the above procedure.

**Note: TT CAR will only wait for one hour after the arrival time of your flight, or 30mins after any agreed appointment time.**

## PREPARING FOR YOUR RETURN

You must phone or email the return location 4 working days in advance to book your return appointment (time).

## RETURN PROCEDURE

**\*No returns prior to 6am or after 8pm.**

Please return your vehicle to the TT CAR TRANSIT office located at "Gare Routiere" (see next page for detailed instructions & photos/map). You will then need to walk 150metres to Terminal 2.

**PEUGEOT**  
DRIVE EUROPE



**CAR-2-EUROPE**

Copyright – Peugeot Drive Europe (NZ), a division of Drive Holidays Ltd.

[www.peugeotdriveeurope.co.nz](http://www.peugeotdriveeurope.co.nz) / [peugeot@driveeurope.co.nz](mailto:peugeot@driveeurope.co.nz) / Ph: +64 9 394 7710

# NICE AIRPORT - 2020



1 – Follow signs to Terminal 2.



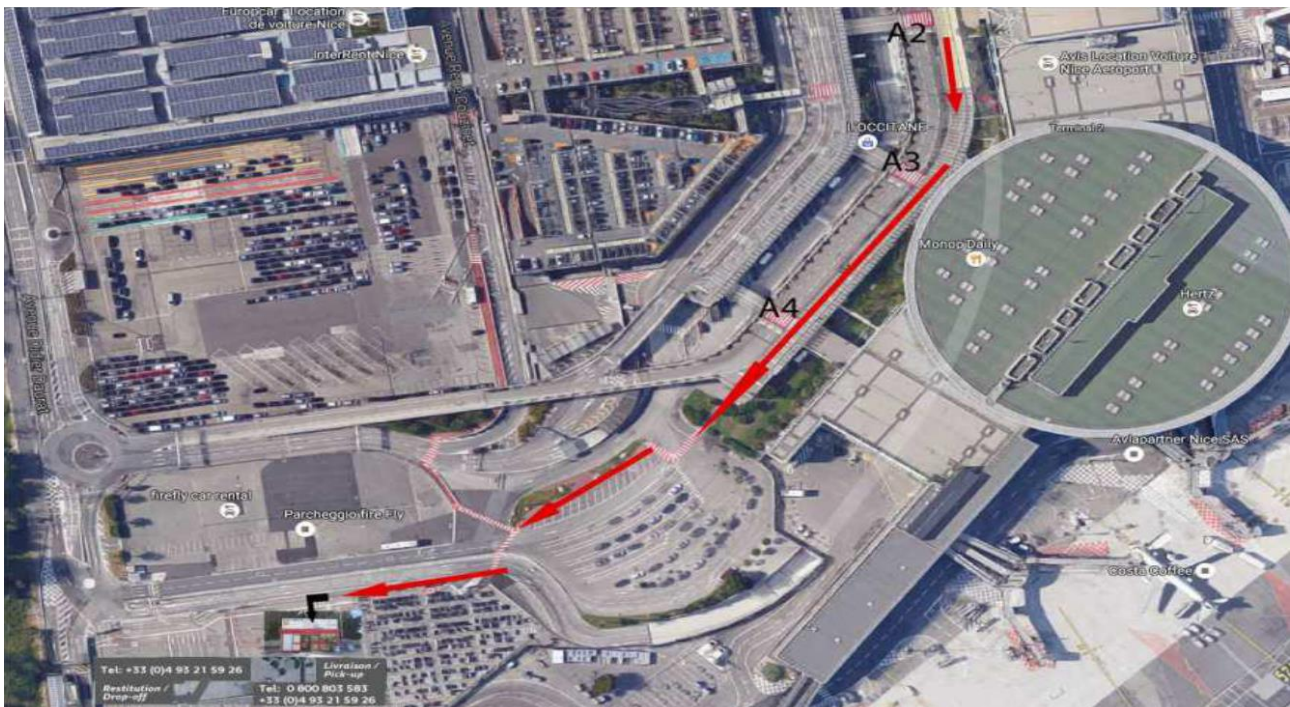
2 – Follow 'Parking' sign – keep right.



3 – Enter the restricted area "Gare Routière / Bus station".



4 – Enter through an automated barrier arm, then look for the red TT Car office on the right.



**PEUGEOT**  
DRIVE EUROPE



**CAR-2-EUROPE**

Copyright – Peugeot Drive Europe (NZ), a division of Drive Holidays Ltd.

[www.peugeotdriveeurope.co.nz](http://www.peugeotdriveeurope.co.nz) / [peugeot@driveeurope.co.nz](mailto:peugeot@driveeurope.co.nz) / Ph: +64 9 394 7710