

# CALAIS PORT- 2020

## REPRESENTATIVE DETAILS

Voyages Ingland  
Zone Industrielle des Dunes  
Rue des Verrotieres  
62100 Calais  
(Enter at the sign "MARMIN TP")

See next page for maps to help you  
find the Calais location.



GOOGLE MAP LINK  
CLICK HERE

## CONTACT DETAILS / HOURS

**p:** +33 (0)3 21 96 36 12  
**m:** +33 (0)6 07 32 15 43  
**e:** [madetourisme@gmail.com](mailto:madetourisme@gmail.com)  
**o:** Mon-Sun 9am-12noon & 2-6pm only  
**Closed:** 1 January & 25 December

## COLLECTION PROCEDURE

When you arrive at the ferry terminal, please contact Voyages Ingland on the above phone number. They will tell you where to wait for your courtesy transfer to the location.

- **Arriving off a train?** Please take a taxi to the address noted above (at your cost).

**Please phone or email the location to reconfirm your collection time 4 working days in advance.**

## PREPARING FOR YOUR RETURN

You must phone or email the return location 4 working days in advance to book your return appointment (time).

## RETURN PROCEDURE

Please return your vehicle to the Voyages Ingland address noted above. You will be returned to the ferry terminal in a courtesy shuttle. Or, for a €30 fee (paid directly) they will take you to the TGV station (approx. 30mins away).

**Note: be sure to put '62100' or 'Calais' as the return CITY in your GPS.**

**PEUGEOT**  
DRIVE EUROPE



**CAR-2-EUROPE**

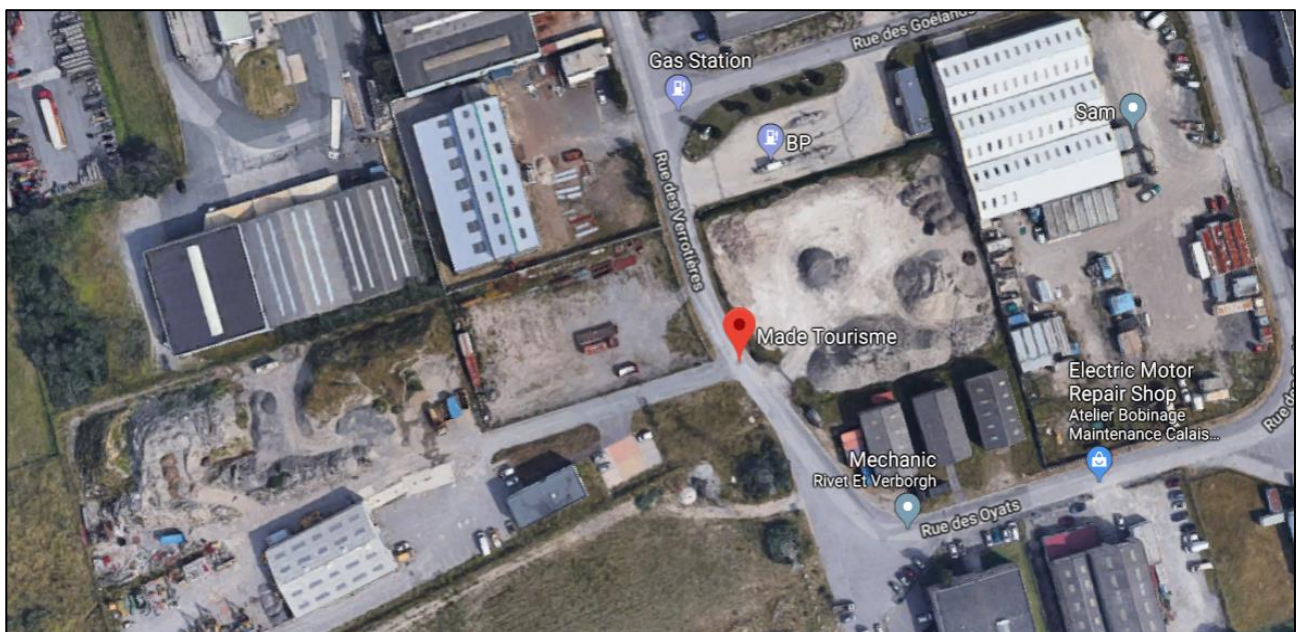
Copyright – Peugeot Drive Europe (NZ), a division of Drive Holidays Ltd.

[www.peugeotdriveeurope.co.nz](http://www.peugeotdriveeurope.co.nz) / [peugeot@driveeurope.co.nz](mailto:peugeot@driveeurope.co.nz) / Ph: +64 9 394 7710

# CALAIS PORT- 2020



GOOGLE MAP LINK  
CLICK HERE



**PEUGEOT**  
DRIVE EUROPE



**CAR-2-EUROPE**

Copyright – Peugeot Drive Europe (NZ), a division of Drive Holidays Ltd.

[www.peugeotdriveeurope.co.nz](http://www.peugeotdriveeurope.co.nz) / [peugeot@driveeurope.co.nz](mailto:peugeot@driveeurope.co.nz) / Ph: +64 9 394 7710